



## Taurbeg Wind Farm Extension of Operational Life

ElAR Volume 2

Photographic Visualisation Booklet





View Point  
VP01

Rockchapel -  
Scenic route 15

Visualisation VP01

View from Co. Cork designated scenic route 15 in the townland of Knockahorrea East, north of Rockchapel. The view is 3.8 km north of the nearest existing Taubeg turbines (T6)

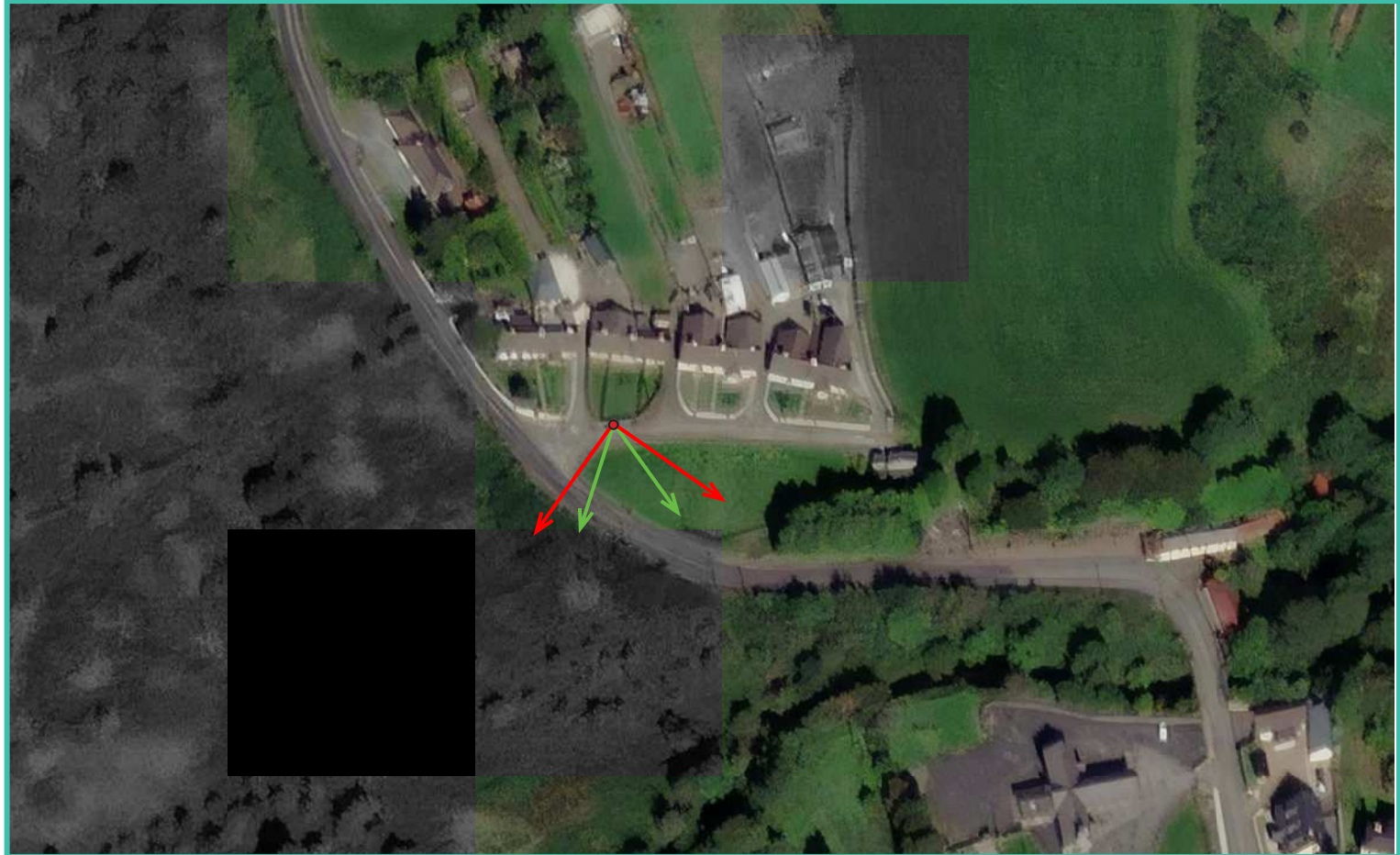
View point grid reference	E 521805 N 616028
Date of image taken	20.09.2024
Time of image taken	09:16
View point elevation	212m
Angle of Views	90° / 53.5°
View Direction (Image Centre)	170°
Horizontal extent of existing Taubeg Wind Farm	12°
Distance to nearest existing Taubeg turbine	3.8km (T6)
Number of existing Taubeg turbines visible	6/11
Turbine Hub Height	67m
Turbine Tip Height	108.2m
Turbine Rotor Diameter	82.4m
Camera & Lens	Canon 5D Mark III / Full Frame Sensor with a 50mm Lens
Tripod	Manfrotto 190X extended to approx 1.5m.
Guidance	* Visual Representation of Development Proposals, Landscape Institute Technical Guidance Note 06/19, 2019
Map Licence	© Bing Maps



View point relative to 10km radius.



View point relative to wind farm site.



Detail of view point location.

Map Legend

- Area shown in 90° view
- Area shown in 53.5° view
- View Point

Wireline Legend

- Existing Taubeg Wind Farm
- Existing Knockacummer Wind Farm
- Existing Glentane Wind Farm

Prepared by  
MKO  
Planning & Environmental Consultants  
Tuam Road, Galway.  
Tel: (091) 73 56 11  
E-mail: info@mkoireland.ie  
Website: www.mkoireland.ie



90° View Extent

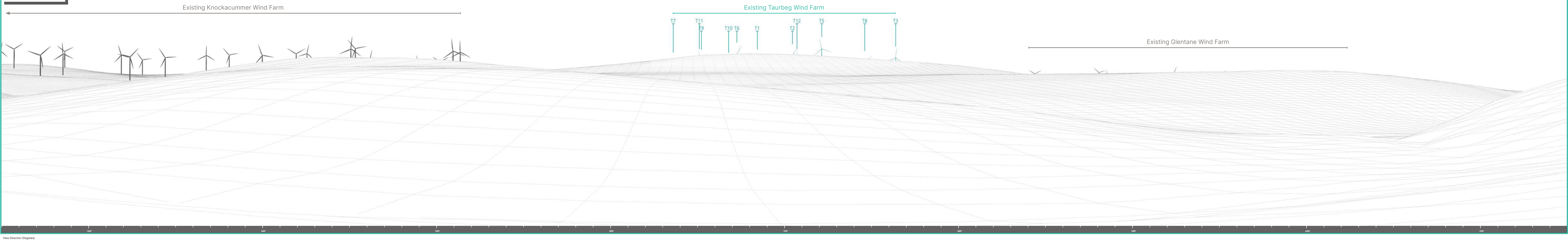


53.5° View Extent





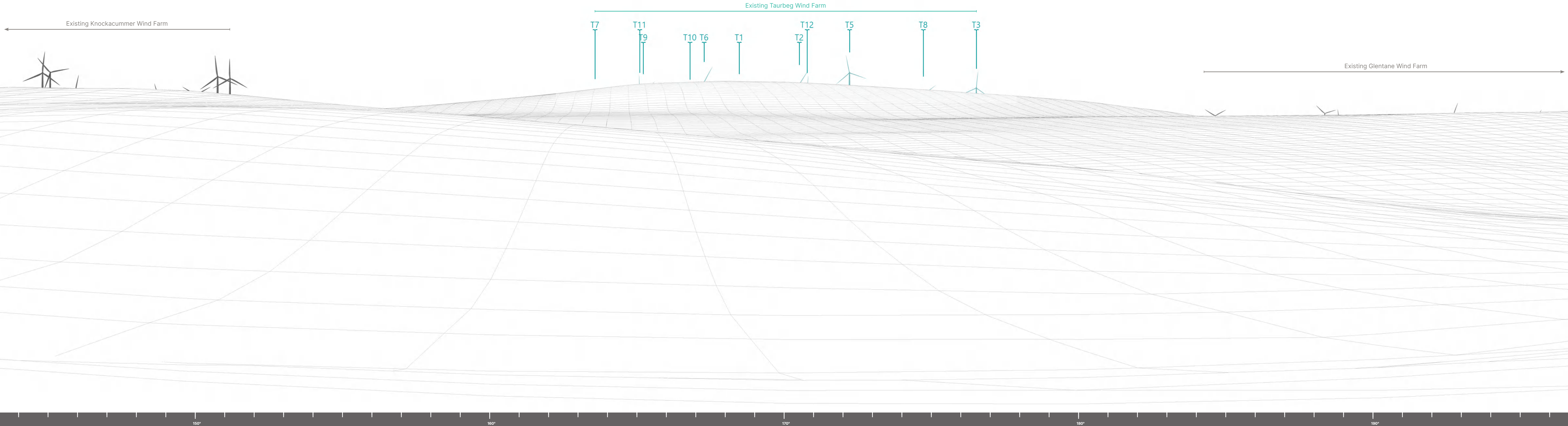
Matching Wireline













View Point  
VP02

Meentiny East -  
Scenic Route 15

Visualisation VP02

View from Co. Cork designated scenic route 15 in the townland of Mintinny East. The view is 2.5km northeast of the nearest existing Taurbeg turbines (T7)

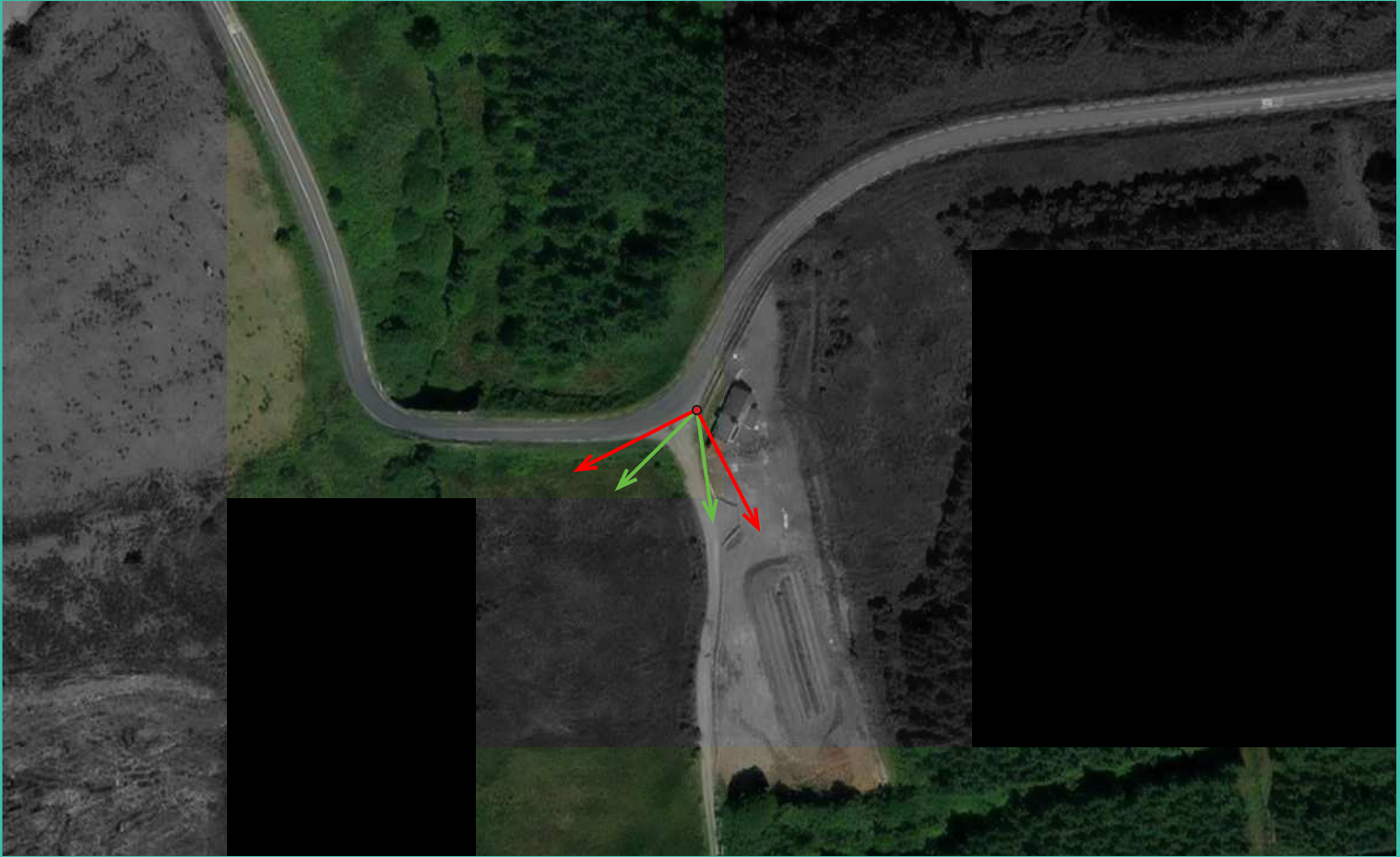
View point grid reference	E 523492 N 614644
Date of image taken	20.09.2024
Time of image taken	09:47
View point elevation	238m
Angle of Views	90° / 53.5°
View Direction (Image Centre)	198°
Horizontal extent of existing Taurbeg Wind Farm	20°
Distance to nearest existing Taurbeg turbine	2.5km (T7)
Number of existing Taurbeg turbines visible	3/11
Turbine Hub Height	67m
Turbine Tip Height	108.2m
Turbine Rotor Diameter	82.4m
Camera & Lens	Canon 5D Mark III / Full Frame Sensor with a 50mm Lens
Tripod	Manfrotto 190X extended to approx 1.5m.
Guidance	* Visual Representation of Development Proposals, Landscape Institute Technical Guidance Note 06/19, 2019
Map Licence	© Bing Maps



View point relative to 10km radius.



View point relative to wind farm site.



Detail of view point location.

Map Legend

- Area shown in 90° view
- Area shown in 53.5° view
- View Point

Wireline Legend

- Existing Taurbeg Wind Farm
- Existing Knockacummer Wind Farm
- Existing Glentane Wind Farm

Prepared by  
MKO  
Planning & Environmental Consultants  
Tuam Road, Galway.  
Tel: (091) 73 56 11  
E-mail: info@mkofireland.ie  
Website: www.mkofireland.ie

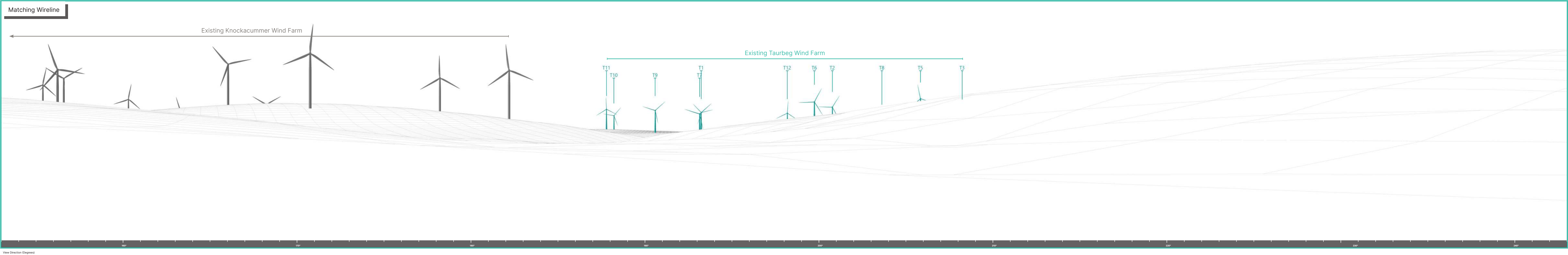


90° View Extent



53.5° View Extent







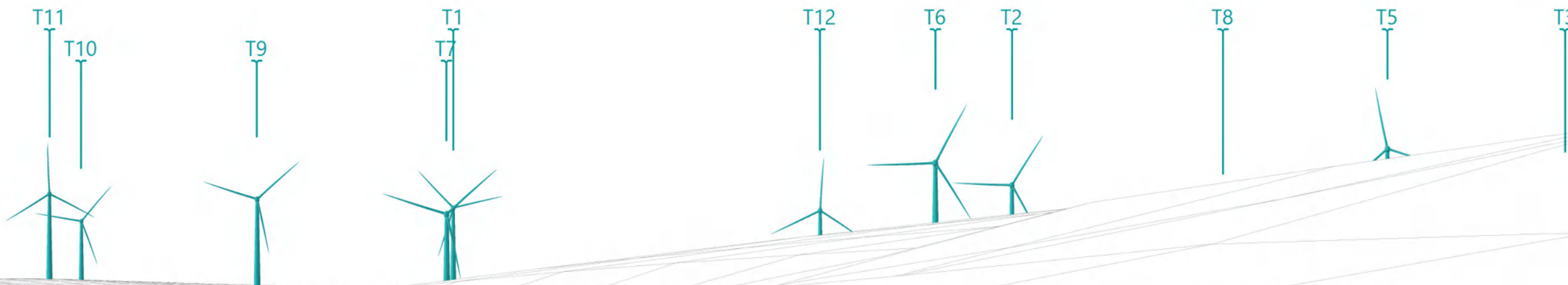
Proposed View at 53.5°





Existing Knockacummer Wind Farm

Existing Taurbeg Wind Farm





### Visualisation VP03

View from a local road known as Scarteen Road in the townland of Scarteen Lower, north of Newmarket. The view is 8.7 km southeast of the nearest existing Taurbeg turbines (T10)

View point grid reference	E 531168 N 608129
Date of image taken	20.09.2024
Time of image taken	10:14
View point elevation	196m
Angle of Views	90° / 53.5°
View Direction (Image Centre)	292°
Horizontal extent of existing Taurbeg Wind Farm	7°
Distance to nearest existing Taurbeg turbine	8.7km (T10)
Number of existing Taurbeg turbines visible	6/11
Turbine Hub Height	67m
Turbine Tip Height	108.2m
Turbine Rotor Diameter	82.4m
Camera & Lens	Canon 5D Mark III / Full Frame Sensor with a 50mm Lens
Tripod	Manfrotto 190X extended to approx 1.5m.
Guidance	* Visual Representation of Development Proposals, Landscape Institute Technical Guidance Note 06/19, 2019
Map Licence	© Bing Maps



View point relative to 10km radius.






View point relative to wind farm site.



Detail of view point location.

#### Map Legend

- Area shown in 90° view 
- Area shown in 53.5° view 
- View Point 

#### Wireline Legend

- Existing Taurbeg Wind Farm
- Existing Knockacummer Wind Farm
- Existing Glentane Wind Farm

Prepared by  
MKO  
Planning & Environmental Consultants  
Tuam Road, Galway.

Tel: (091) 73 56 11  
E-mail: info@mkoireland.ie  
Website: www.mkoireland.ie



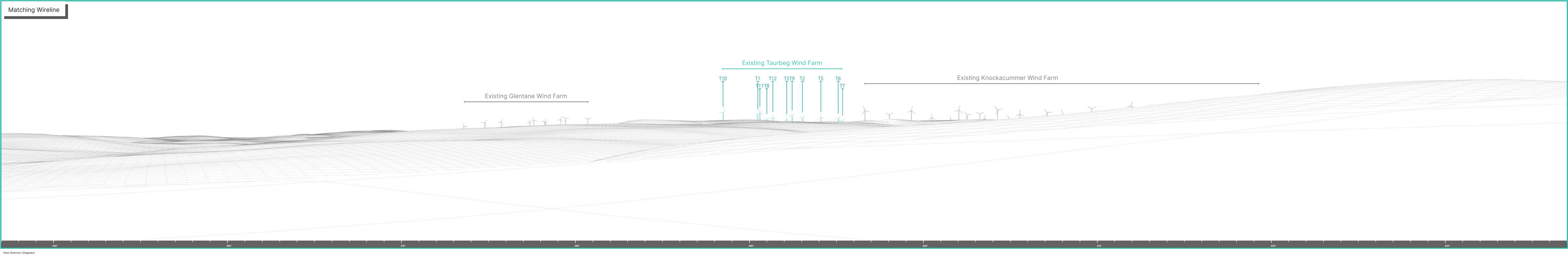
90° View Extent

Key Image at 120°



53.5° View Extent

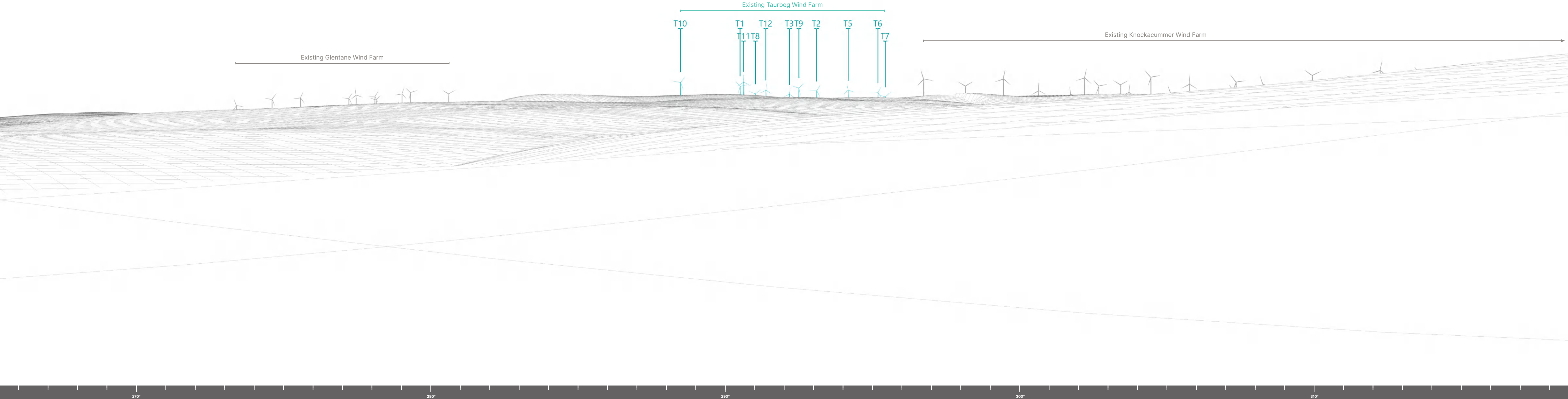














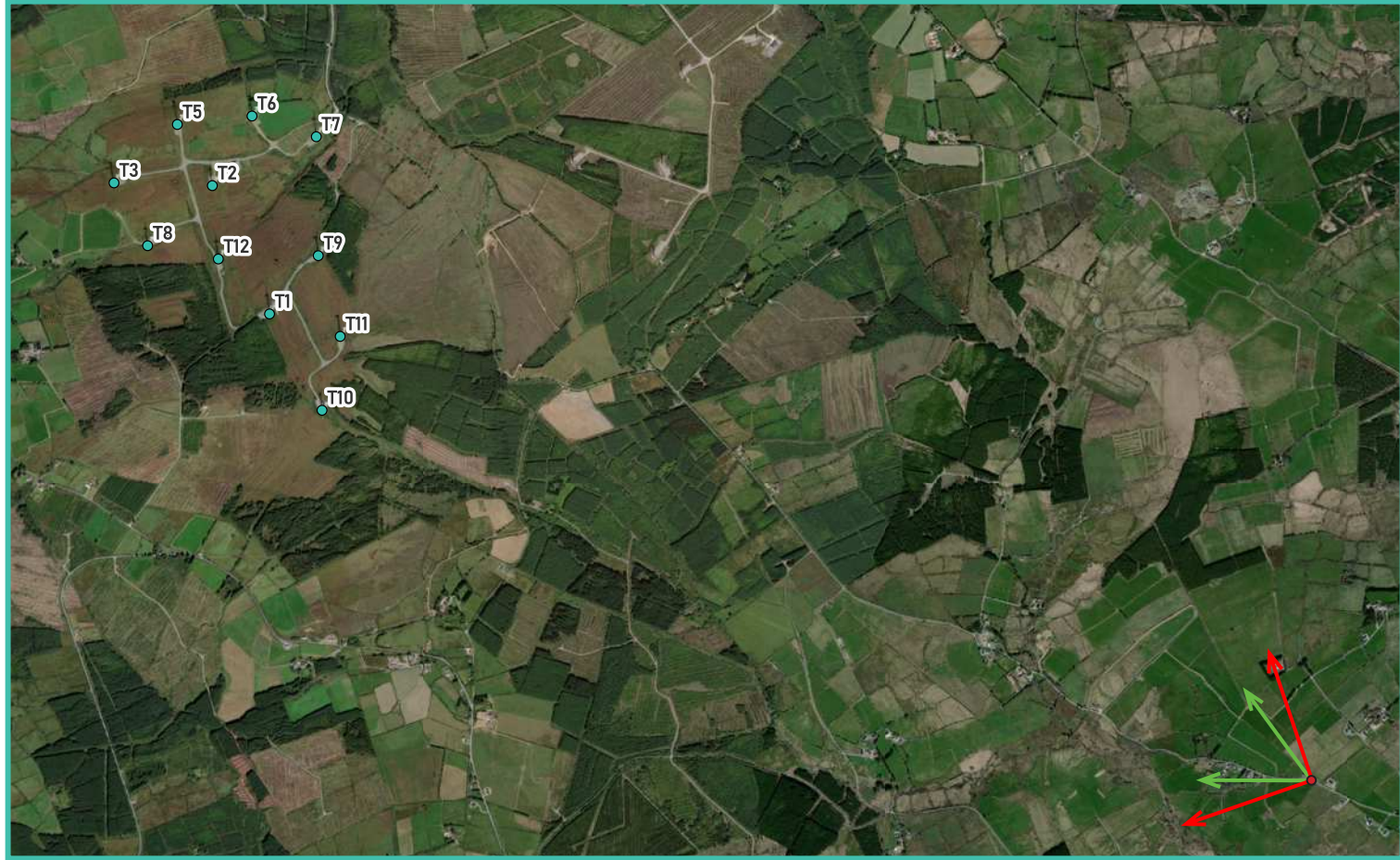
### Visualisation VP04

View from a local road in the townland of Commons South. The view is 4.6 km southeast of the nearest existing Taurbeg turbines (T10)

View point grid reference	E 527219 N 609346
Date of image taken	20.09.2024
Time of image taken	10:49
View point elevation	257m
Angle of Views	90° / 53.5°
View Direction (Image Centre)	296°
Horizontal extent of existing Taurbeg Wind Farm	12°
Distance to nearest existing Taurbeg turbine	4.6km (T10)
Number of existing Taurbeg turbines visible	11/11
Turbine Hub Height	67m
Turbine Tip Height	108.2m
Turbine Rotor Diameter	82.4m
Camera & Lens	Canon 5D Mark III / Full Frame Sensor with a 50mm Lens
Tripod	Manfrotto 190X extended to approx 1.5m.
Guidance	* Visual Representation of Development Proposals, Landscape Institute Technical Guidance Note 06/19, 2019
Map Licence	© Bing Maps



View point relative to 10km radius.



View point relative to wind farm site.



Detail of view point location.

#### Map Legend

- Area shown in 90° view
- Area shown in 53.5° view
- View Point

#### Wireline Legend

- Existing Taurbeg Wind Farm
- Existing Knockacummer Wind Farm
- Existing Glentane Wind Farm

Prepared by  
MKO  
Planning & Environmental Consultants  
Tuam Road, Galway.  
Tel: (091) 73 56 11  
E-mail: info@mkoireland.ie  
Website: www.mkoireland.ie

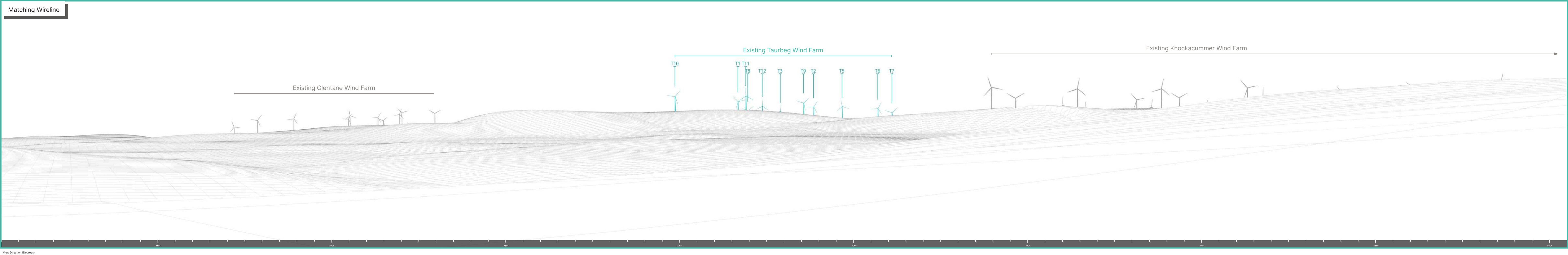


90° View Extent



53.5° View Extent

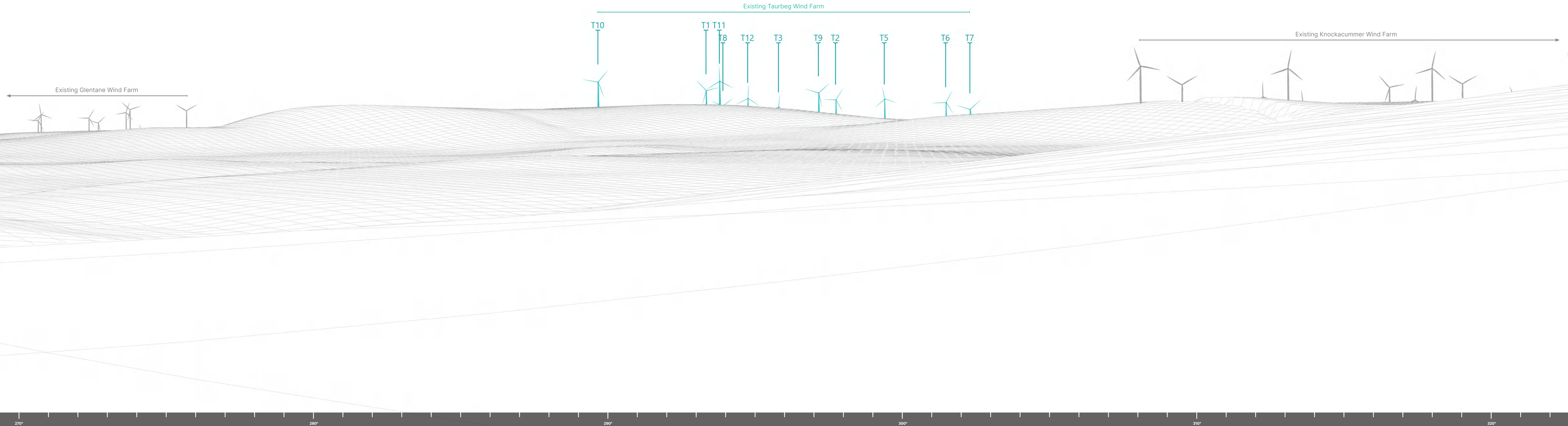














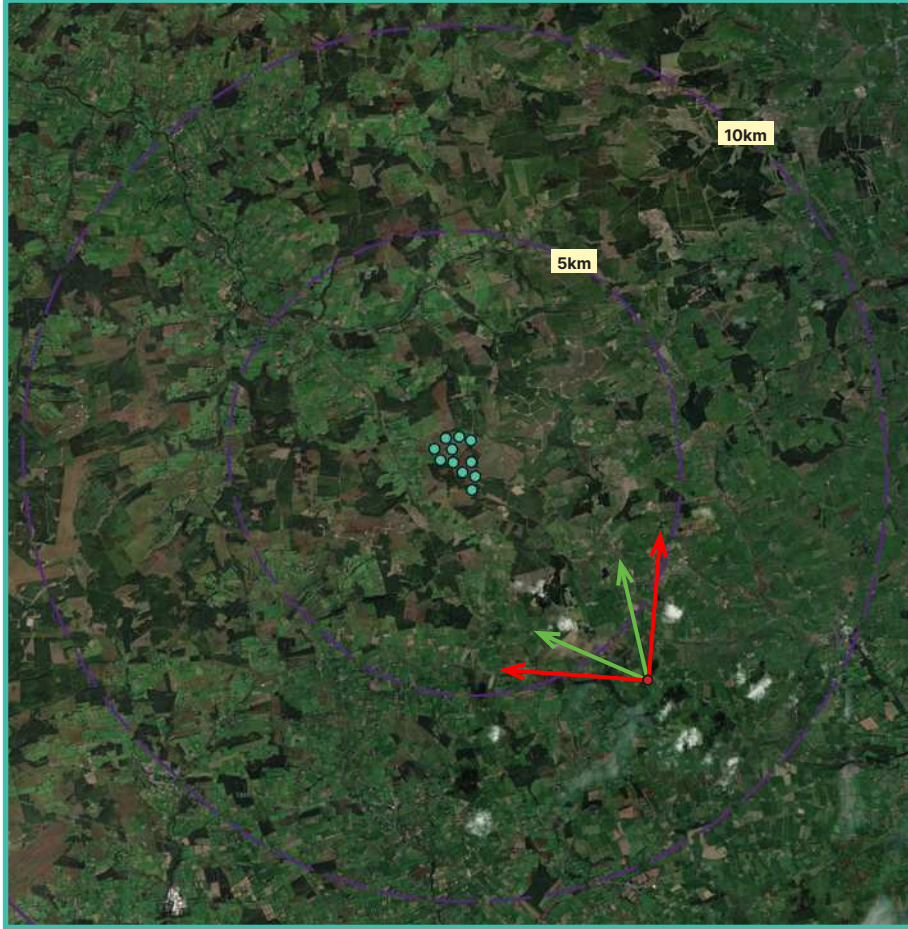
View Point  
VP05

Barnacurra -  
Scenic Route 17

Visualisation VP05

View from Co. Cork designated scenic route 17 in the townland of Barnacurra. The view is 6.2 km north of the nearest existing Taurbeg turbines (T10)

View point grid reference	E 527149 N 606355
Date of image taken	20.09.2024
Time of image taken	11:22
View point elevation	247m
Angle of Views	90° / 53.5°
View Direction (Image Centre)	319°
Horizontal extent of existing Taurbeg Wind Farm	7°
Distance to nearest existing Taurbeg turbine	6.2km (T10)
Number of existing Taurbeg turbines visible	11/11
Turbine Hub Height	67m
Turbine Tip Height	108.2m
Turbine Rotor Diameter	82.4m
Camera & Lens	Canon 5D Mark III / Full Frame Sensor with a 50mm Lens
Tripod	Manfrotto 190X extended to approx 1.5m.
Guidance	* Visual Representation of Development Proposals, Landscape Institute Technical Guidance Note 06/19, 2019
Map Licence	© Bing Maps



View point relative to 10km radius.



View point relative to wind farm site.



Detail of view point location.

Map Legend

- Area shown in 90° view
- Area shown in 53.5° view
- View Point

Wireline Legend

- Existing Taurbeg Wind Farm
- Existing Knockacummer Wind Farm
- Existing Glentane Wind Farm

Prepared by  
MKO  
Planning & Environmental Consultants  
Tuam Road, Galway.  
Tel: (091) 73 56 11  
E-mail: info@mkofireland.ie  
Website: www.mkofireland.ie



90° View Extent



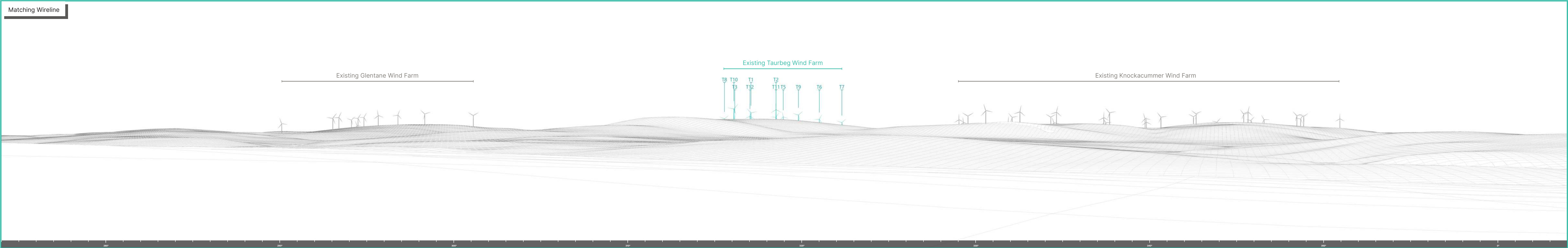
53.5° View Extent



Proposed View at 90°



Matching Wireline

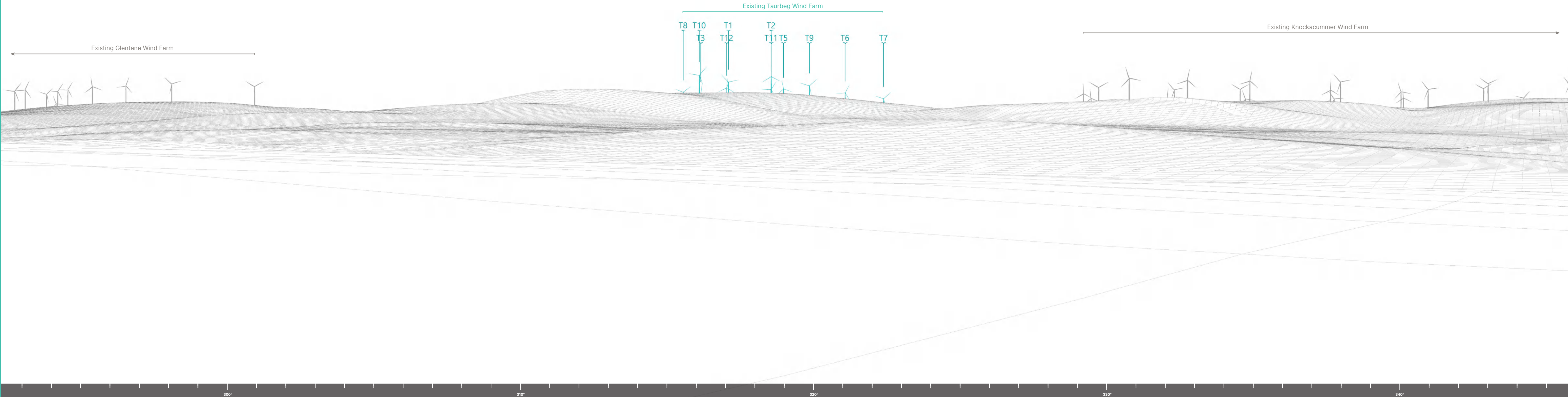




Proposed View at 53.5°









Visualisation VP06

View from a local road in the townland of Glennakeel North. The view is 3.4 km northwest of the nearest existing Taubeg turbines (T10)

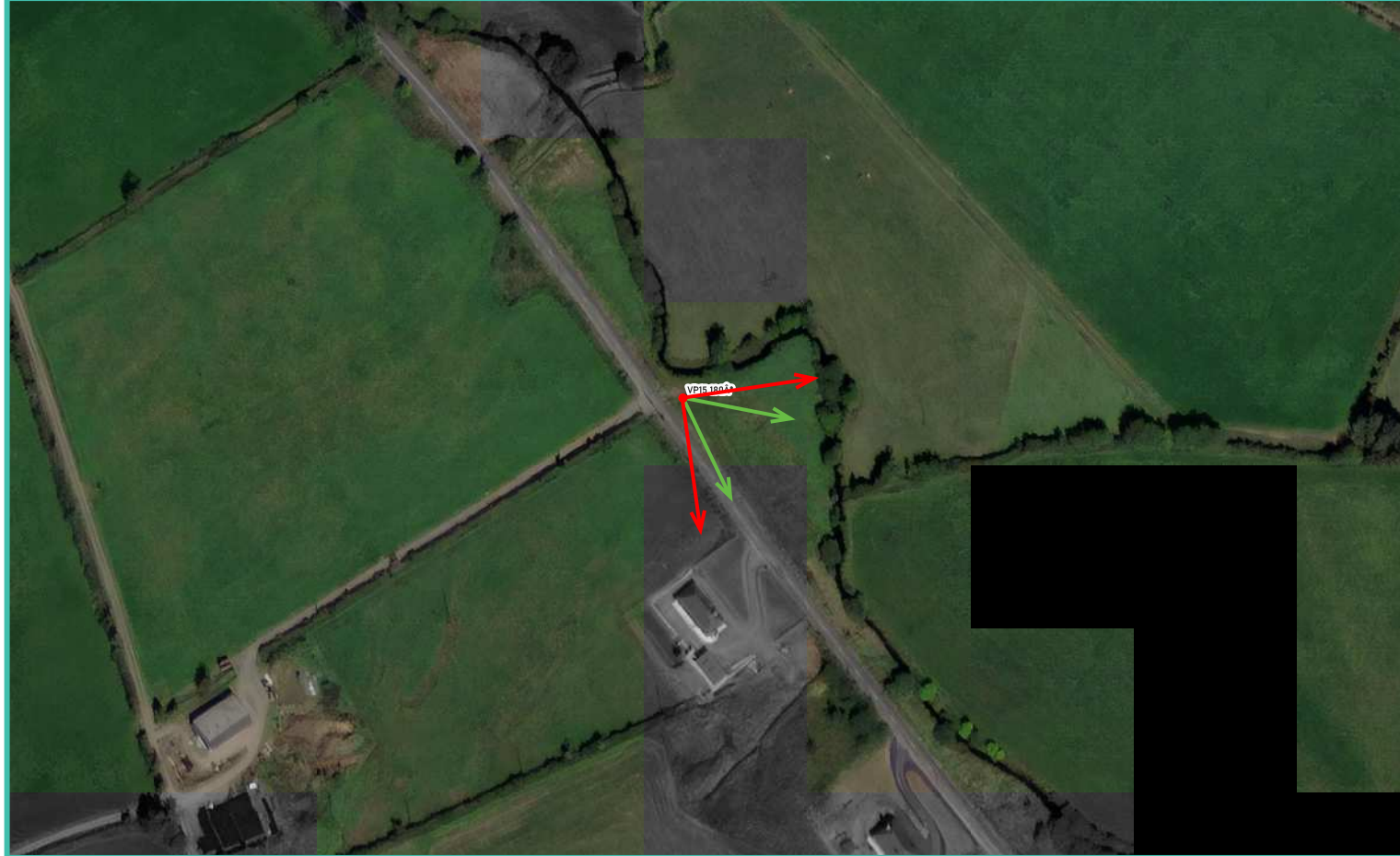
View point grid reference	E 519424 N 614098
Date of image taken	20.09.2024
Time of image taken	12:36
View point elevation	180m
Angle of Views	90° / 53.5°
View Direction (Image Centre)	127°
Horizontal extent of existing Taubeg Wind Farm	13°
Distance to nearest existing Taubeg turbine	3.4km (T10)
Number of existing Taubeg turbines visible	10/11
Turbine Hub Height	67m
Turbine Tip Height	108.2m
Turbine Rotor Diameter	82.4m
Camera & Lens	Canon 5D Mark III / Full Frame Sensor with a 50mm Lens
Tripod	Manfrotto 190X extended to approx 1.5m.
Guidance	* Visual Representation of Development Proposals, Landscape Institute Technical Guidance Note 06/19, 2019
Map Licence	© Bing Maps



View point relative to 10km radius.



View point relative to wind farm site.



Detail of view point location.

Map Legend

- Area shown in 90° view
- Area shown in 53.5° view
- View Point

Wireline Legend

- Existing Taubeg Wind Farm
- Existing Knockacummer Wind Farm
- Existing Glentane Wind Farm

Prepared by  
MKO  
Planning & Environmental Consultants  
Tuam Road, Galway.

Tel: (091) 73 56 11  
E-mail: info@mkofireland.ie  
Website: www.mkofireland.ie



90° View Extent



53.5° View Extent



Proposed View at 90°



Matching Wireline

